

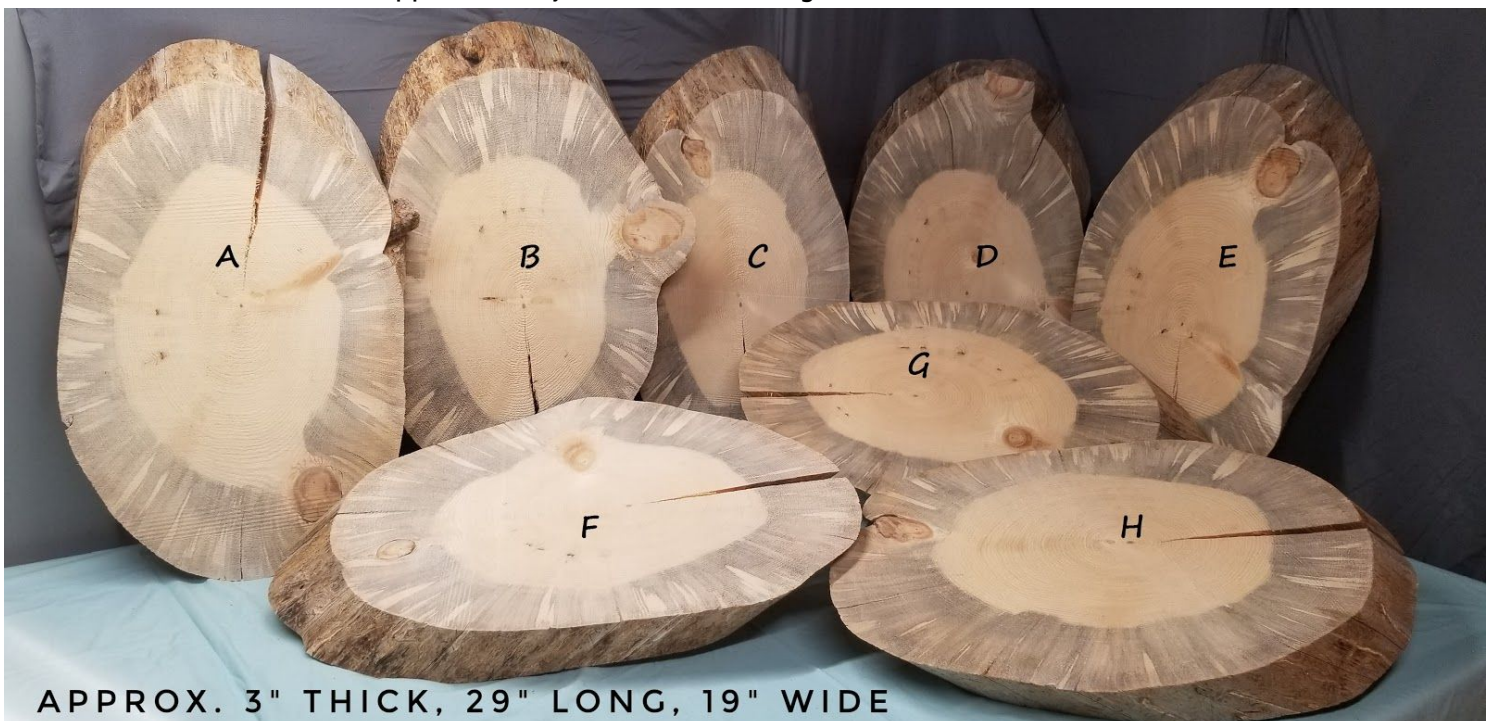
Smaller Slab & End Tables

Below you will find 3 images. Within each image there are different styles. You can choose from any of these tables to be customized for you. (Instructions are listed on page 2)

1. Half-Oval Slab Tables - Sizes are approximately 2" Thick, 40" Long, and 21" Wide.



2. Oval end tables - Sizes are approximately 3" Thick, 29", Long, and 19" Wide



3. Round End Tables - Sizes are approximately 3" thick with a 20" diameter.

approx. 3" thick with a 20" diameter



Uncompleted and ready to be customized.

1. Choose your desired table top by emailing us the type of table (Oval, Half oval, or Round) and which table top by identifying the letter shown in the image.
2. Typically tables come with straight iron legs. Specify if/which options you would like to see implemented. (Such as twisted legs or a bottom shelf)
3. We will send the proposed amount for your review and approval.
4. Thereafter, we will mail or deliver (if local) your package safely and securely.

Contact info:

Jessica York - Email: jnyork.montana@gmail.com. | Phone: 406-593-7896